

# SPIRIT



## Online Support

If you require assistance or are experiencing issues with your Spirit Unit, please contact customer care for additional help.



1-888-707-1880



[customerservice@dyaco.ca](mailto:customerservice@dyaco.ca)

**CSF-FUNT** FUNCTIONAL  
TRAINER

16812595260



# Table of Contents

---

Product Registration .....	3
Warning / Safety Instructions	
Product Labels .....	4
Safety Instructions .....	5
Facility Safety .....	6
Precautions .....	7
Safety Guidelines .....	8
Assembly	
Parts of Your Unit .....	10
Assembly .....	11
Maintenance	
Maintenance & Care .....	17
Exploded View Diagram.....	18
Warranty	
Warranty .....	19

## PRODUCT REGISTRATION

---

Congratulations on your new unit, and welcome to the Spirit Fitness family!

Thank you for your purchase of this quality unit from Spirit Fitness. Your new unit was manufactured by one of the leading fitness manufacturers in the world and is backed by one of the most comprehensive warranties available. Through your dealer, Spirit Fitness will do all we can to make your ownership experience as pleasant as possible for many years to come.

If not purchased direct from Spirit Fitness, the local dealership where you purchased this unit is your administrator for all Spirit Fitness warranty and service needs. Their responsibility is to provide you with the technical knowledge and service personnel to make your experience more informed and any difficulties easier to remedy.

Please take a moment at this time to record the name of the dealer, their telephone number, and the date of purchase below to make any future, needed contact easy. We appreciate your support and we will always remember that you are the reason that we are in business.

Serial Number	
Date of Purchase	
Dealer / Place of Purchase	
Date of Installation	

### WARRANTY REGISTRATION

Please visit us at [www.dyaco.ca/warranty.html](http://www.dyaco.ca/warranty.html) to register your purchase

# PRODUCT LABELS

The following pages show examples of warning labels and communication stickers placed on the equipment as part of the manufacturing process.

It is critical that owners maintain the integrity and placement of these stickers. If you find any stickers missing or damaged contact your local dealer or distributor for a replacement.

If any instructions or information are not clear, and please contact to DYACO CANADA INC. customer service right away.

NOTE: STICKERS AND LABELS ARE NOT SHOWN TO SCALE

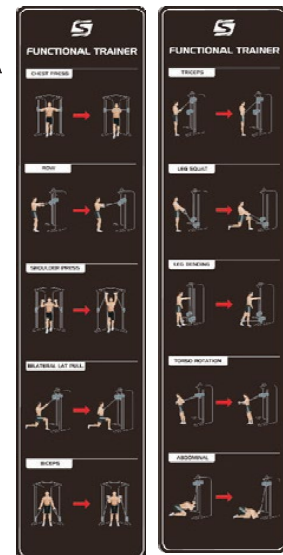
Warning Decal



Serial Number Decal



Exercise Warning Decal



# SAFETY INSTRUCTIONS

---

Read the Owner's Manual carefully before assembling, servicing or using the equipment. It is the responsibility of the facility owner and/or owner of the equipment to instruct users on proper operation of the equipment and review all labels.



**WARNING** - Serious injury could occur if these safety precautions are not observed:

1. Obtain a medical exam before beginning any exercise program .
2. Stop exercising if feeling faint, dizzy or experiencing pain and consult your physician .
3. Obtain instructions before using .
4. Read and understand the owner's manual and all warnings posted on the unit before using .
5. Keep all children (12 and under) away. Teenagers (13 and over) and disabled must be supervised .
6. Keep body and clothing free from and clear of all moving parts .
7. Use the unit only for the intended use. DO NOT modify the unit .
8. Inspect unit prior to use. DO NOT use if it appears damaged or inoperable .
9. Inspect all cables and connections prior to use. DO NOT use if any components are worn, frayed or damaged.
10. DO NOT attempt to fix a broken or jammed unit. Notify floor staff .
11. DO NOT use if guards are missing or damaged .
12. Be sure that the weight pin is completely inserted. Use only the pin provided by the manufacturer .
13. If unsure seek assistance.
14. Never pin the weights in an elevated position. DO NOT use this unit if found in this condition .
15. Seek assistance from floor staff.

16. DO NOT use dumbbells or other incremental weights, except those provided by the manufacturer .
17. Report any malfunctions, damage or repairs to the facility .
18. Replace any warning labels if damaged, worn or illegible .
19. DO NOT use this unit outdoors .
20. Max User Weight Limit: 400 lbs.



Please ensure that you review and adhere to the user weight restrictions of your new unit. Failure to do so may result in serious injury or damage to your unit.

# FACILITY SAFETY PRECAUTIONS

---



## WARNING!

- Read the Owner's Manual carefully before assembling, servicing or using the equipment.
- Make sure that each unit is set up and operated on a solid level surface.
- Make sure that all users are properly trained on how to use the equipment.
- Make sure there is enough room for safe access and operation of the equipment.
- Perform regular maintenance checks on the equipment. Also pay close attention to all areas most susceptible to wear, including (but not limited to) cables, pulleys, belts and grips.
- Immediately replace worn or damaged components. If unable to immediately replace worn or damaged components then remove from service until the repair is made.
- Use only Dyaco Canada Inc. supplied components to maintain/repair the equipment.
- Keep a repair log of all maintenance activities.
- Inspect all cables and belts and connections prior to use. DO NOT use if any components are worn, frayed or damaged.

*NOTE: It is the sole responsibility of the user/owner or facility operator to ensure that regular maintenance is performed.*

## PRECAUTIONS

---

These safety notes are directed to you as the owner of the Strength Equipment manufactured by Dyaco Canada Inc. Please train all your users and fitness staff to follow these safety instructions.

### DO

- Do encourage each of your users to discuss their health program or fitness regimen with a healthcare professional.
- Do stop operating your Strength Equipment if you feel dizzy or faint.
- Do perform regular preventative maintenance.
- Do exercise slowly until you reach a level of comfort.

### DO NOT

- Do not let unsupervised children operate the Strength Equipment.
- Do not use without proper athletic shoes.
- Do not use outdoors, or in an enclosed pool environment.
- Do not drop or insert any object, hands, or feet into any opening or within the area of the product.
- Do not attempt to remove any shrouds or modify the Strength Equipment.



## WARNING

- Your Strength Equipment manufactured by Dyaco Canada Inc. is designed for the exercise in a commercial or consumer environment.
- Please check with your physician prior to beginning any exercise program.
- Do not push yourself to excess. Stop if you are feeling faint, dizzy, or exhausted. Use common sense during workout.
- Read the owner's manual in its entirety before operating the Strength Equipment.
- Failure to obey this warning can result in injury or death.

## SAFETY GUIDELINES AND PRACTICE

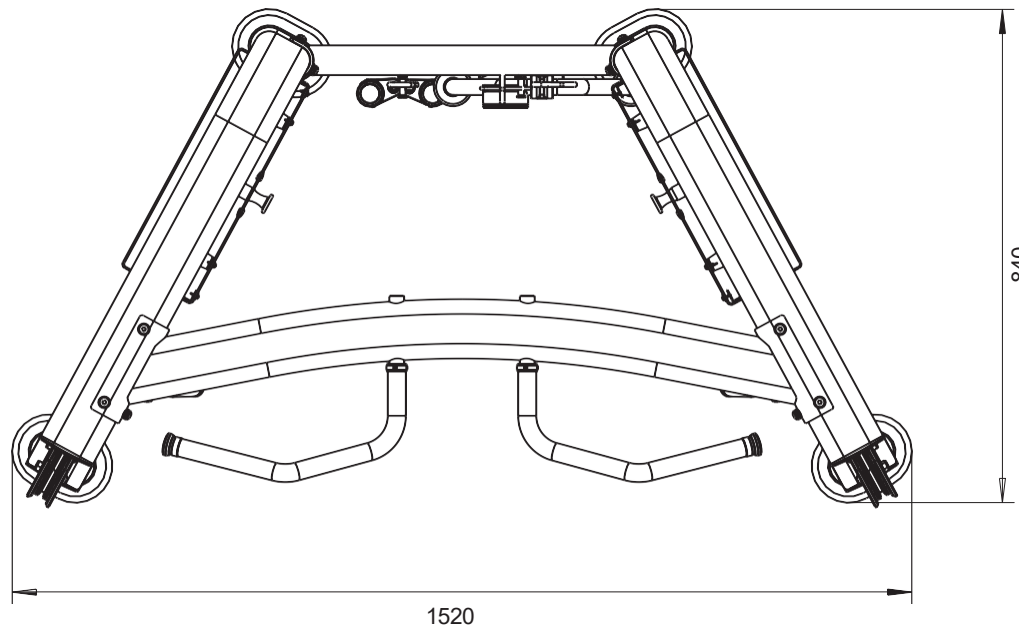
---

Dyaco Canada Inc. recommends that all fitness equipment be used in a supervised area. It is recommended that the equipment be located in an access controlled area. Control is the responsibility of the owner. The extent of control is at the discretion of the owner. It is the responsibility of the purchaser/user of Dyaco Canada Inc. products to read and understand the owner's manual, and warning labels; as well as instruct all individuals, whether end users or supervising personnel, on proper usage of the equipment.

- Use machine only as described in the manual. Failing to follow proper instructions may result in injury.
- Do not lean against or pull on the framework or any component, whether machine is at rest or in use.
- Inappropriate or improper use may result in injury to users or third parties (bystanders).
- Do not use machine if it is not located on a solid level surface or is improperly installed.
- Provide an adequate safety perimeter between the machine, walls and other equipment to ensure that the facility has the proper clearance for usage and training.

### Live Area and Training Area

The live area shall be not less than 63" (160cm) greater than the training area in the directions from which the equipment is accessed. The live area must also include the area for emergency dismount



## ASSEMBLY & SETUP

---

Use the following procedures to unpack and assemble your Strength Equipment manufactured by Dyaco Canada Inc.

### Unpacking & Parts

1. Position the shipping carton so the Heavy End is located at the bottom.
2. Cut the straps then lift the box over the unit and unpack. Remove all parts from the shipping carton and foam inserts, and verify that all parts are included in your shipment:
3. Locate the hardware package. The hardware is separated into four steps. Remove the tools first. Remove the hardware for each step as needed to avoid confusion. The numbers in the instructions that are in parenthesis (#) are the item number from the assembly drawing for reference.

NOTE: All tools required to assemble the Strength Equipment are included within the packaging. If you are missing any of the parts listed above, inspect the packing material and the box for items that may have been overlooked.

If parts are missing, or if you have any operational questions, please call your local Dyaco Canada Inc. 's Service department or the distributor who sold you the product. Have your serial number ready.

CAUTION: Damage to the Strength Equipment during assembly is not covered as part of the limited Dyaco Canada Inc. warranty. Take care not to drop or lean the Strength Equipment on its side.

Carefully stand the Strength Equipment up in the normal upright position on a stable surface so it will not tip over during assembly. Protect the environment by not disposing of this product with household waste. Check your local authority or approved waste center for recycling advice and facilities.

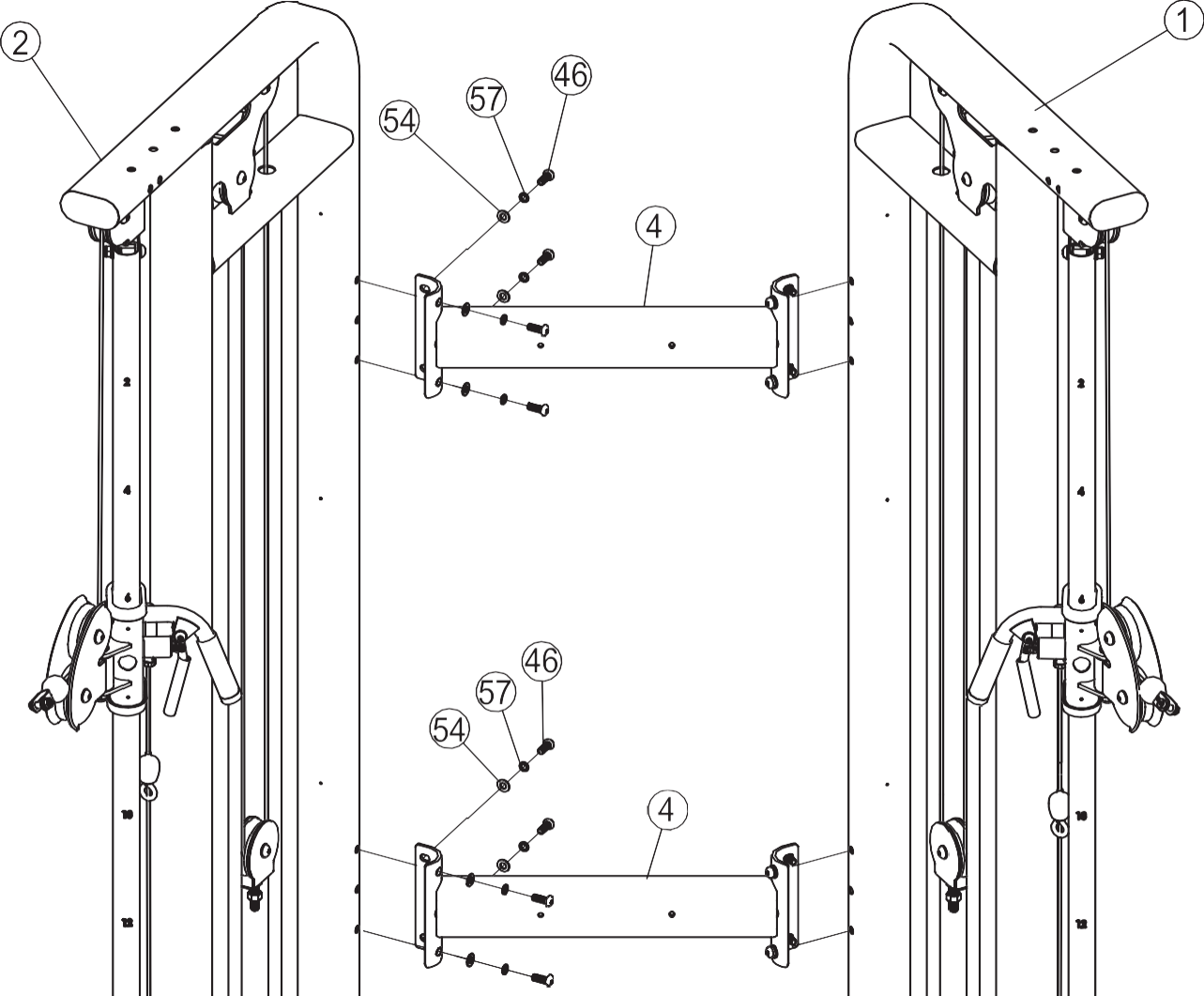
## PARTS OF YOUR UNIT

---



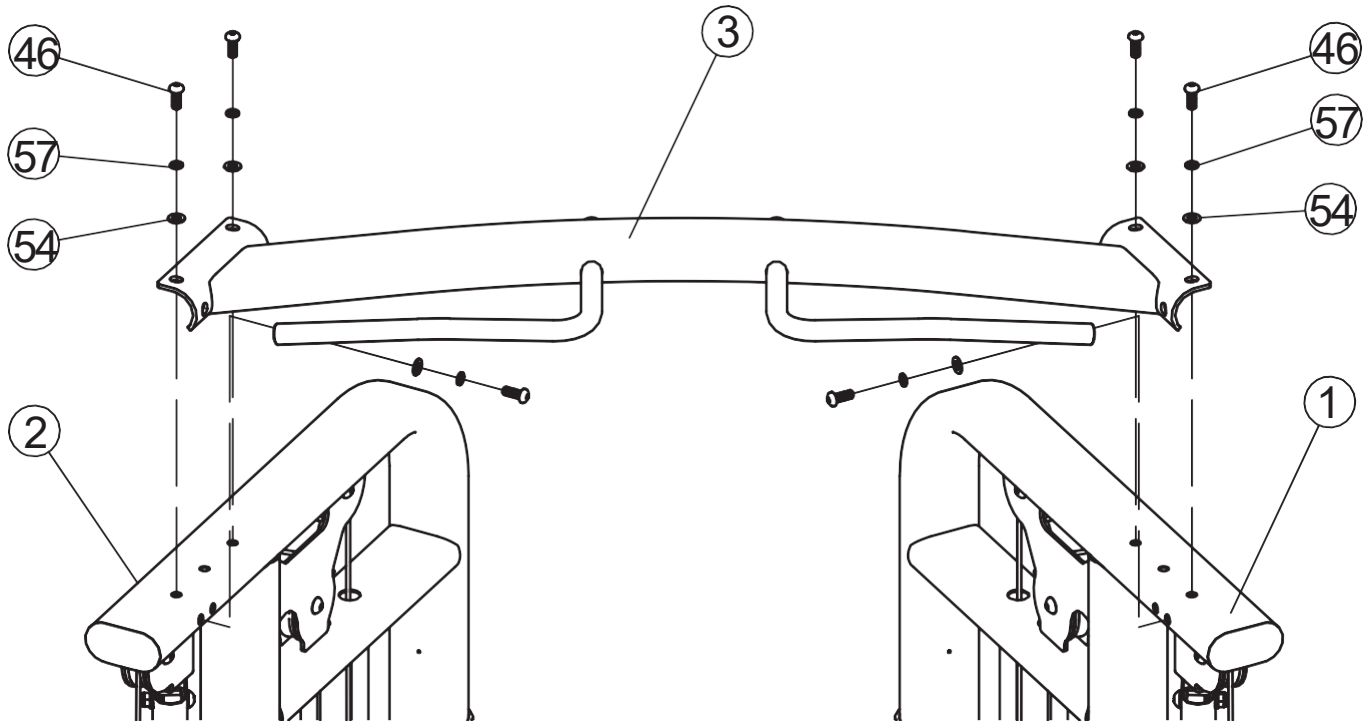
# ASSEMBLY - STEP ONE

No.	Description	Spec	Qty
001	Left Doorframe		1
002	Right Doorframe		1
004	Link Span		2
046	Socket Cap Screw	M10*25	16
054	Flat Washer	φ20*φ10.5*2	16
057	Spring Washer	M10	16



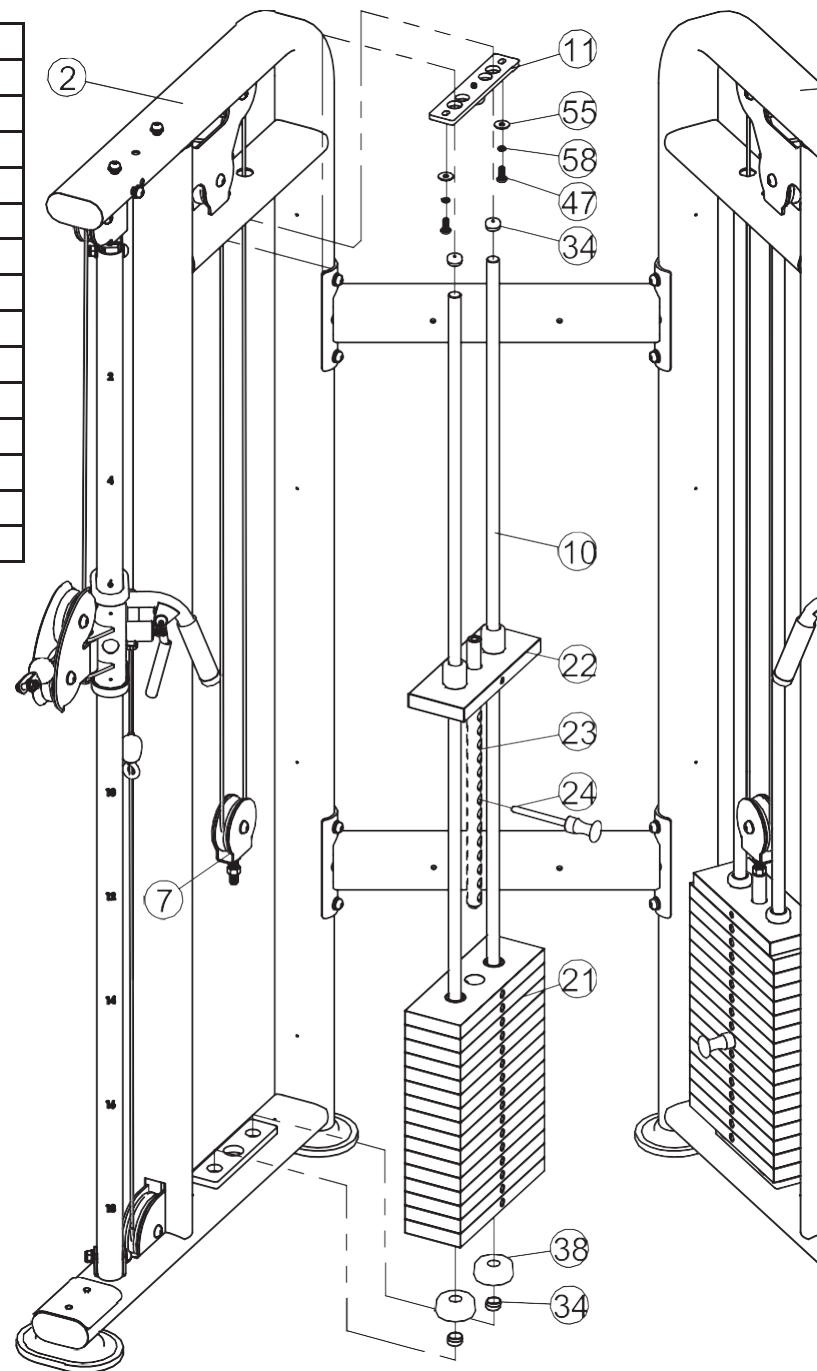
# ASSEMBLY - STEP TWO

No.	Description	Spec	Qty
001	Left Doorframe		1
002	Right Doorframe		1
003	Upper Beam Bracket		1
046	Socket Cap Screw	M10*25	6
054	Flat Washer	$\phi 20 \times \phi 10.5 \times 2$	6
057	Spring Washer	M10	6



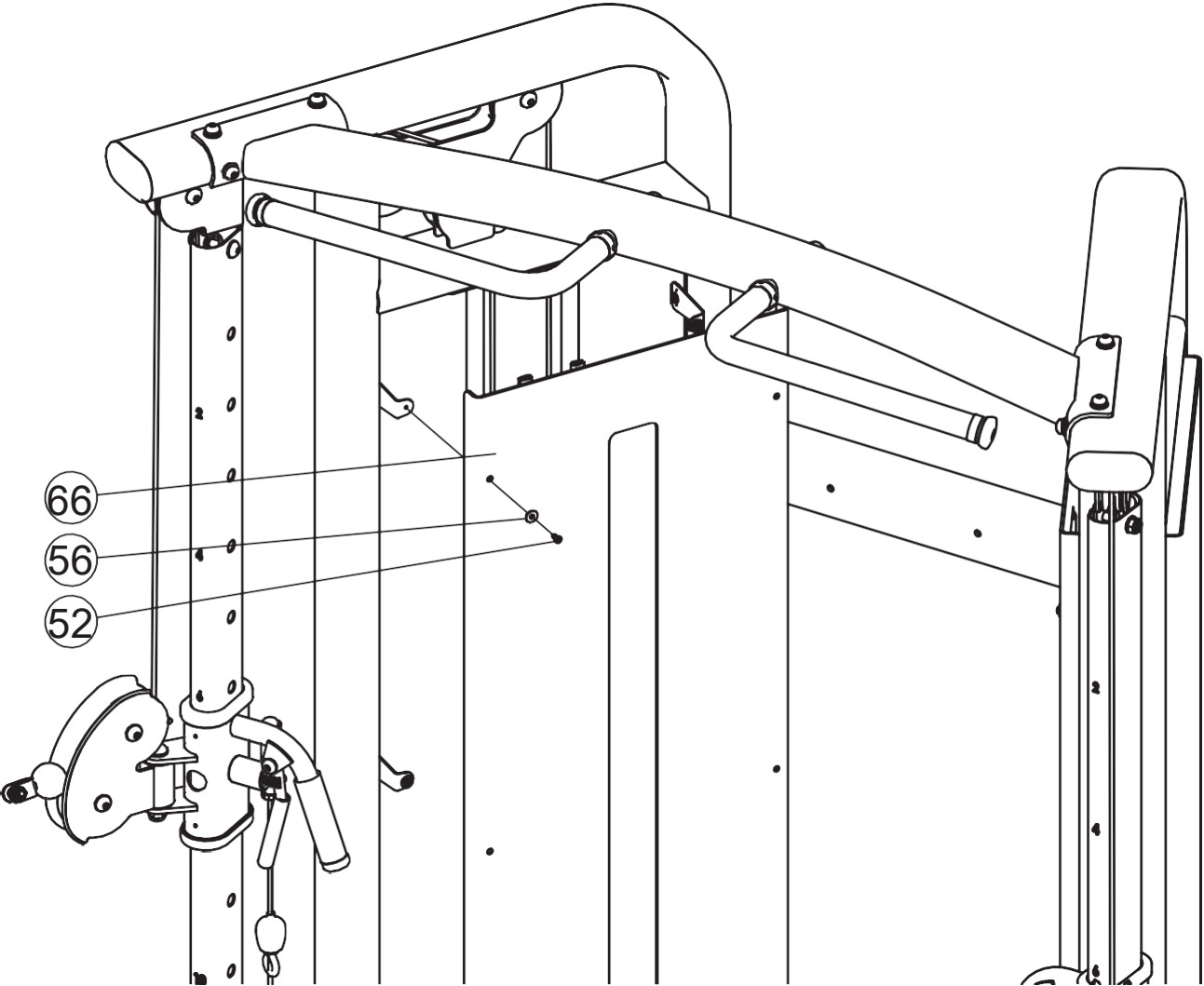
## ASSEMBLY - STEP THREE

No.	Description	Spec	Qty
001	Left Doorframe		1
002	Right Doorframe		1
007	Roller Hanger		2
010	Guide Rod	$\phi 20 \times 1726$	4
011	Guide Rod Fixing Plate		2
021	10LB Weight Stack		32
022	10LB Counter Weight Stack Set		2
023	17 Holes Shaft		2
024	Select Pin		2
034	Rod End Cover		8
038	Rubber Bumper	$\phi 62 \times \phi 20 \times 26$	4
047	Umbrella Head Hexagon Socket Screw	M8*25	4
055	Big Washer	$\phi 24 \times \phi 8.4 \times 2$	4
058	Spring Washer	M8	4



# ASSEMBLY - STEP FOUR

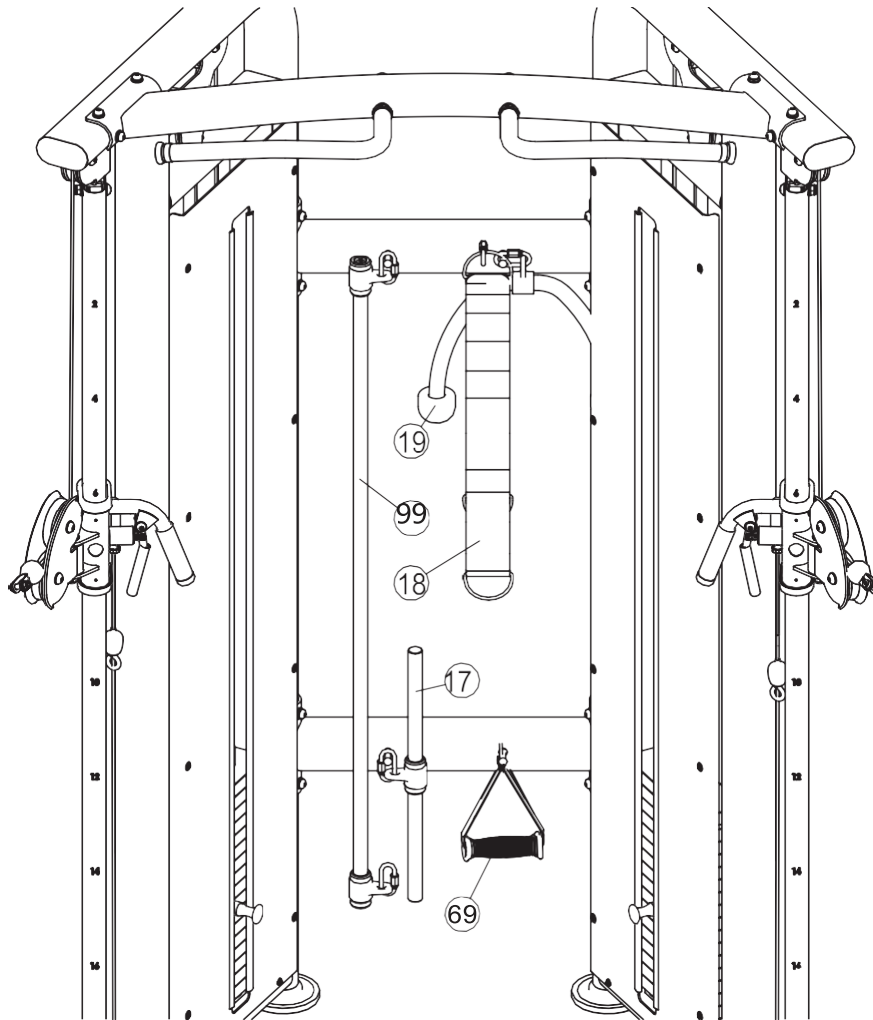
No.	Description	Spec	Qty
052	Cross Recessed Pan Head Tapping Screw	ST4.2*16	20
056	Big Washer	φ15*φ5.3*1.2	20
066	Front Shield		2




## ASSEMBLY - STEP FIVE

---

No.	Description	Spec	Qty
017	Short Handle Set		1
018	Knee Cover Set		1
019	Pull Back Rope Set		1
069	Handle Grips		2
099	Squat Handle Set		1




# START WORKOUT




**FUNCTIONAL TRAINER**  
**EXERCISEUR FONCTIONNEL**


CHEST PRESS   PRESSE PECTORALE



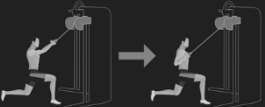
ROW   RAMER




SHOULDER PRESS   PRESSE DES ÉPAULES




BILATERAL LAT PULL   TIR LATÉRAL BILATÉRAL




BICEPS   BICEPS






**FUNCTIONAL TRAINER**  
**EXERCISEUR FONCTIONNEL**


TRICEPS   TRICEPS




LEG SQUAT   ACCROUPEMENT DES JAMBES




LEG BENDING   FLÉCHISSEMENT DES JAMBES



TORSO ROTATION   ROTATION DU TORSE



ABDOMINAL   ABDOMINAL



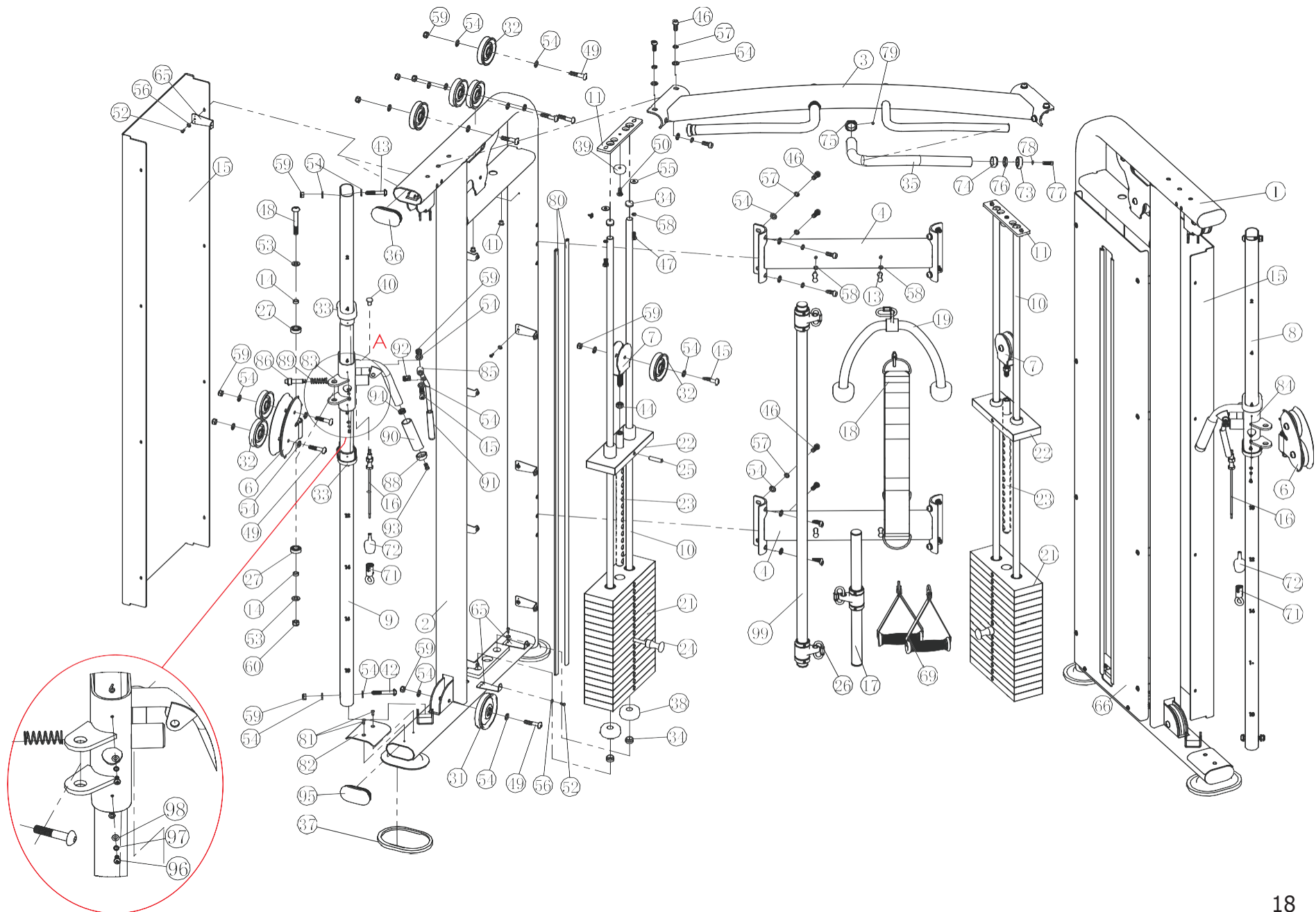
# MAINTENANCE

A regular preventative maintenance schedule with all fitness equipment ensures that products are working at an optimal condition without affecting the end user exercise experience. To assist in the maintenance regiment, it is recommended to break service into: Daily, Weekly, & Monthly activities. Reference the table below on the preventative maintenance activities to be performed.

All preventive maintenance activities must be performed on a regular basis. Performing routine preventive maintenance actions can aid in providing safe, trouble-free operation of all Dyaco Canada Inc. equipment. Dyaco Canada Inc. is not responsible for performing regular inspection and maintenance actions for your machines. Instruct all personnel in equipment inspection and maintenance actions and also in accident reporting and recording.

Action	Daily	Weekly	Monthly	Bi-Monthly
Cleaning				
Handgrips	✓			
Main Frame		✓		
Guide Rod			✓	
Internal Tower				✓
Inspect				
Belt / Cables		✓		
Fasteners			✓	
Handgrips			✓	
Labels			✓	
Pulleys				✓
Main Frame				✓
Lubricate				
Guide Rods			✓	

# EXPLODED VIEW DIAGRAM



## WARRANTY - COMMERCIAL

---

### Functional Trainer LIMITED WARRANTY

Dyaco Canada Inc. warrants the unit for a period of time listed below from the date of installation, as determined by sale receipt, or in the absence of a sales receipt eighteen (18) months from the original factory shipping date. Dyaco Canada Inc.'s responsibilities include providing new or remanufactured parts, at Dyaco Canada Inc.'s option, and technical support to our independent dealers and servicing organizations. In the absence of a dealer or service organization, these warranties will be administered by Dyaco Canada Inc. directly. The warranty period applies to the following applicable components:

Commercial Warranty	10 Years	5 Years	6 Months	1 Year
	Frame / Welds / Cams / Plates	Bushings / Bearings / Shocks / Pulleys / Guide Rods	Paint & Finishes / Cables / Grips / Belt / Attachments / All other parts	Pull Pin Components / Labour

## NORMAL RESPONSIBILITIES OF THE FACILITY

THE FACILITY IS RESPONSIBLE FOR THE ITEMS LISTED BELOW:

1. The warranty registration must be completed online within 10 days of the delivery date to validate the manufacturer's limited warranty.
2. Proper use of the fitness equipment in accordance with the instructions provided in this manual.
3. Expenses for making the fitness equipment accessible for servicing, including any item that was not part of the fitness equipment at the time it was shipped from the factory.
4. Damages to the fitness equipment finish during shipping, installation or following installation.
5. Routine maintenance of this unit as specified in this manual.

## WARRANTY - CONTINUED

---

### EXCLUSIONS

This warranty does not cover the following:

1. CONSEQUENTIAL, COLLATERAL, OR INCIDENTAL DAMAGES SUCH AS PROPERTY DAMAGE AND INCIDENTAL EXPENSES RESULTING FROM ANY BREACH OF THIS WRITTEN OR ANY IMPLIED WARRANTY. NOTE: Some provinces do not allow the exclusion or limitation of incidental or consequential damages, so this limitation or exclusion may not apply to you.
2. Service call reimbursement to the facility. Service call reimbursement to the dealer that does not involve malfunction or defects in workmanship or material, for units that are beyond the warranty period, for units that are beyond the service call reimbursement period, for fitness equipment not requiring component replacement, or fitness equipment not in non-dues paying facility or household use.
3. Damages caused by services performed by persons other than authorized Dyaco Canada Inc. service companies; use of parts other than original Dyaco Canada Inc. parts; or external causes such as corrosion, discoloration of paint or plastic, alterations, modifications, abuse, misuse, accident, improper maintenance, inadequate power supply, or acts of God.
4. Products with original serial numbers that have been removed or altered.
5. Products that have been: sold, transferred, bartered, or given to a third party.
6. Products that do not have a warranty registration on file at Dyaco Canada Inc. Dyaco Canada Inc. reserves the right to request proof of purchase if no warranty record exists for the product.
7. THIS WARRANTY IS EXPRESSLY IN LIEU OF ALL OTHER WARRANTIES EXPRESSED OR IMPLIED, INCLUDING THE WARRANTIES OF MERCHANTABILITY AND/OR FITNESS FOR A PARTICULAR PURPOSE.
8. Product used in prisons and correctional facilities.

## WARRANTY - CONTINUED

---

### SERVICE

Twelve (12) months from the date of installation or eighteen (18) months from the date of factory shipping as determined by the serial number establishes the labour warranty period should service be required. If service is performed, it is in your best interest to obtain and keep all receipts. This written warranty gives you specific legal rights. You may also have other rights that vary from province to province. Service under this warranty must be obtained by following these steps, in order:

1. Contact your selling authorized Dyaco Canada Inc. dealer. OR
2. Contact your local authorized Dyaco Canada Inc. service organization.
3. If there is a question as to where to obtain service, contact our service department at (888) 707-1880.
4. Dyaco Canada Inc.'s obligation under this warranty is limited to repairing or replacing, at Dyaco Canada Inc.'s option, the product through one of our authorized service centers. All repairs must be preauthorized by Dyaco Canada Inc.
5. The owner is responsible for adequate packaging upon return to Dyaco Canada Inc. Dyaco Canada Inc. is not responsible for damages in shipping. Make all freight damage claims with the appropriate freight carrier. DO NOT SHIP ANY UNIT TO OUR FACTORY WITHOUT A RETURN AUTHORIZATION NUMBER. All units arriving without a return authorization number will be refused.
6. For any further information, or to contact our service department by mail, send your correspondence to:

DYACO CANADA INC.  
5955 Don Murie St  
Niagara Falls, ON L2G 0A9

Product features or specifications as described or illustrated are subject to change without notice.  
All warranties are made by Dyaco Canada Inc.



5955 Don Murie, Niagara Falls, ON L2G 0A9 | Phone: 888-707-1880 | Fax: 905-353-8968

©2023 All Rights Reserved. CSF-FUNT Owner's Manual